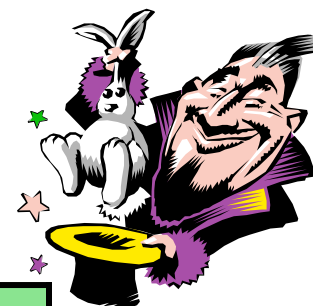
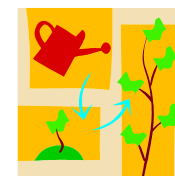


Cheerful Giving chart (weekly pay)



Take-home pay, per week	Weekly giving at 10%	Weekly giving at 5%	Weekly giving at 2.5%
£500	£50	£25	£12.50
£350	£35	£17.50	£8.75
£207 (37.5 hrs at Minimum Wage 2007/08)	£20.70	£10.35	£5.18
£119.05 (State pension incl Pension Credit)	£11.91	£5.95	£2.98

grow
your
giving



THE CHURCH OF ENGLAND

Diocese of Bath & Wells

Changing Lives, Changing Churches for Changing Communities

Cheerful Giving chart (monthly pay)



Take-home pay, per month	Monthly (<i>weekly</i>) giving at 10%	Monthly (<i>weekly</i>) giving at 5%	Monthly (<i>weekly</i>) giving at 2.5%
£2,250 (27,000)	£225 (£52)	£113 (£26)	£56 (£13)
£1,500 (18,000)	£150 (£35)	£75 (£17)	£38 (£9)
£1,000 (12,000)	£100 (£23)	£50 (£12)	£25 (£6)
£500 (6,000)	£50 (£12)	£25 (£6)	£13 (£3)

grow
your
giving

