

January 2016

RE SUBJECT LEADERS NEWSLETTER



DIOCESE OF BATH & WELLS

Changing Lives, Changing Churches for Changing Communities

PLEASE ENSURE YOUR RE SUBJECT LEADER RECEIVES THIS NEWSLETTER - Thank you

Welcome to the Spring edition of the Diocesan RE update. I hope you have all had a great Christmas break and are refreshed and renewed. There are some exciting things going on in the world of RE this year, so there are important dates for your diary. Please read on!

CPD opportunities

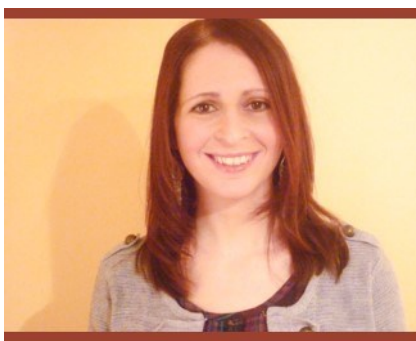
You should have received a brochure at school but the latest version is available to download from our [website](#). Below are the RE highlights for the rest of the year:

If you would like to book on any of the courses then please contact Jayne Brown on 01749 685122 or email jayne.brown@bathwells.anglican.org

8th June 2016 - RE Subject Leaders' Conference at The Bishop's Palace

We are now taking bookings! Please contact: Jayne.brown@bathwells.anglican.org

Our keynote speaker is Julia Diamond-Conway from 'RE Today.' She will be presenting a new resource to support the teaching of Christianity, exploring with us the role of multi-faith RE in promoting British Values and Character Education, and offering engaging approaches to teaching Islam. Julia has worked for 14 years in primary schools and had positions in the national world of RE, before taking up her position with 'RE Today'. Some will remember previous conferences led by Julia's colleagues Lat Blaylock and Fiona Moss. 'RE Today' has a long standing tradition of producing creative, inspirational RE that works well in the classroom.



Godly Play

Jane Tibbs, our Early Years Adviser is leading a training afternoon on Monday 18th January, for staff, governors and volunteers in schools and churches. Jane will demonstrate how to share religious stories with children in creative and imaginative ways. If you, or someone else in your school is interested, please contact Jayne Brown ASAP. Jayne.brown@bathwells.anglican.org

Learn, Teach, Lead RE

There will be a **FREE conference** to launch LTLRE in our area (Dioceses of Bath & Wells and Bristol) This will be held in a hotel near Bristol on **30 June-1st July**. RE subject leaders are most welcome to attend this, although it is targeted at those teachers/HLTAs who find themselves teaching RE but are not so confident, in primary and secondary church and community schools and academies. Following the conference, local hubs will meet about once a term to continue to support those teachers. Please alert your teachers to this conference and your headteachers, so that teachers can be released. Further details of the conference and how to book will follow in the new year. I'm really excited about LTLRE and its potential to support classroom RE and grow new leaders. Don't miss out on the opportunity!

Would you like a lead role in this school-centred, teacher-led project?

LTLRE project is soon to recruit primary and secondary teachers of RE to act as hub leaders (Project Leaders in RE, PLREs). Please see the advert on the next pages.

Awareness, Mystery and Value review - Assessment after levels

The reviews of AMV are underway in Somerset and North Somerset/B&NES/Bristol. There won't be any major changes to the syllabus, but there will be further planning advice and renewed schemes of work for teachers to use, should they wish. There will also be assessment advice now that the 'I can' levels are redundant.

There are different models of RE assessment currently under construction, most based around minimum expectations of knowledge, skills and understanding of Christianity, other major world faiths and some generic religious ideas, such as prayer. There will be advice on how to match these with Awareness, Mystery and Value, in each of our three local authorities; Somerset, North Somerset and Bath & North East Somerset. However that advice may vary from one authority to another.

Here at the Diocese we will present each model to our schools and academies, and encourage them to choose a model of RE assessment which best matches the assessment of other curriculum areas and gives the best opportunity for monitoring pupil progress and reporting to parents.

The AMV websites will be updated and training on the revised AMV will be offered. Somerset LA will be circulating training dates soon in the new year.

Festival Matters

This resource, a set of 6 CDs, is still the advice for schools when teaching the major Christian festivals of Easter, Pentecost, Harvest and Christmas and replaces the old paper schemes of work provided by the Diocese many years ago.

If you are beginning to think of how to provide quality teaching and learning on Easter across the primary years, please order a copy of Festival Matters through Veronica Elks, or borrow a copy from our [Resource Centre](#). Veronica is here to help and support with all RE resourcing. Veronica.elks@bathwells.anglican.org

North Somerset RE coordinators cluster meeting

Our next meeting is at St John the Evangelist, Clevedon on 20th Jan, from 4pm until 5.15. Any RE leaders in North Somerset are welcome. Please [contact me](#), or Jane Simmonds at St John's, just for refreshments and photocopying.

Finally, please feel free to ring me at the Old Deanery any time for RE advice. I also enjoy leading RE staff meetings, or just coming to your schools to meet with you, discuss planning, your monitoring role etc.

With very best wishes from us all in the school's team

Pauline Dodds:

Pauline.dodds@bathwells.anglican.org



Learn Teach Lead **RE**
Improving quality: building community

Would you like a lead role in this school-centred, teacher-led project?

The Learn, Teach, Lead RE (LTLRE) project is recruiting teachers of RE (primary and secondary phases) to lead others in this funded programme of continuing professional development

We are currently looking for primary and secondary Project Leaders in RE (PLREs) who would co-ordinate hubs in the following areas:

- 1: Swindon/North Wilts
2. South Gloucestershire
3. Bristol
4. Weston Super-Mare
5. Taunton
6. Bath
7. Yeovil

This programme is funded through grants from the Jerusalem Trust and St Matthias Trust. It is managed through a Steering Group representing SACREs (Standing Advisory Council on Religious Education), universities and CPD providers in RE across from Minehead to Swindon (area 2). LTLRE aims to support all teachers and leaders of RE through developing a common understanding of effective teaching and learning in the subject. It is expanding across into this region having been successfully established in Devon and Cornwall for 3 years. In addition it runs several successful projects for example 'Assessment without levels (in RE)' – please see the [LTLRE website](#) for details.

The Project Leaders of RE (PLREs) The principle role of the PLREs is to run a twilight in-service training session each term, encouraging other teachers to engage with the development of RE and to enhance the subject in their schools. To prepare for this, PLREs receive training each year through the annual conference and PLRE training events and through support and guidance from the project team provided on-line, and in schools. This work provides an opportunity to apply to relevant providers, such as the National College of Teaching and Leadership (NCTL), for accreditation as an SLE, or to engage in Higher Education programmes and Fellowships.

The successful applicants for the role will be newly or fully qualified with an active interest in RE in primary, secondary or special educational settings. Teachers in the early stages of their (RE) career are welcome to apply. PLREs will have demonstrated the ability to work effectively and supportively with other colleagues, and to have shown actual or potential leadership in the subject. They will develop further their skills in disseminating good practice in the subject through meetings, INSET sessions, and through e-learning resources. This role would equip you to become a local specialist leader of religious education and a leader of CPD for other teachers at a local and national level.

PLREs will be appointed for a period of 3 years.

Resources for PLREs and their schools

Teachers who are PLREs will attend the equivalent of two days training per year. The project will provide up to £340 per year to each school towards supply cover and other internal costs subject to attendance. During the training sessions the teachers will receive continuing professional development (CPD) from trainers who will help them prepare for hub meetings, and to create materials for the project's website. They also have access to up to £300 a year for additional CPD support, either for personal development or for use in their hubs.

The next conference is near Bristol on 30th June until 1st July .

How to apply for the PLRE role: please fill in the application form which is online. Please note that locations for the hub meetings are shared around the local area. While it is advisable for the hub leader to be working in a local school in the hub area, this is not essential. Successful applicants for interview will be contacted by the Project's Director within 2 weeks of application during term time. **This advertisement will remain in place on our website until all vacancies are filled.** References will be taken up for shortlisted candidates.

Interviews for PLREs will take place in February. A contribution to the cost of supply cover is available for interviewees' schools. The newly appointed PLREs will be given help to set up their hubs from members of the steering group.

Professional note to head teachers, governors and school managers: this partnership opportunity is one of the key opportunities for teachers to engage in CPD for RE in this region. The project's steering group invites schools in all sectors and phases to consider and support appropriate candidates for the role of PLRE. A letter of partnership agreement will be sent to all schools supporting successful applicants.

For more information please visit: <http://www.ltre.org/> or e-mail Ed Pawson, Project Director (area 2), on efpawson@gmail.com