

# The Three Parishes Benefice



St Mary's Church,  
Saltford.

All Saints Church,  
Corston.

Holy Trinity Church,  
Newton St Loe.

## Benefice Profile



April 2023



DIOCESE OF  
**Bath & Wells**

Living the story. Telling the story.



# WELCOME AND INTRODUCTION



## Contents

1. Looking Ahead -Our Vision	3
2. The Benefice	4
3. Our Strengths and Challenges	8
4. The Life of the Three Churches	9
5. Resources	14
6 The New Rector	16
Appendices	

## Welcome to St Mary's Saltford, All Saints Corston and Holy Trinity Newton St. Loe.

We are delighted you are reading this Profile and encourage you to pray about whether this position might be the role to which God is calling you.

Our Benefice includes three diverse village parishes set below the southern edge of the Cotswolds in the beautiful Avon Valley between Bath and Bristol. St Mary's is in Saltford, a suburban village which has expanded significantly since the 1940s. All Saints Corston and Holy Trinity Newton St Loe are in two small rural villages nearby.

Although each church has a preferred style of worship, prayer and discipleship, we are discovering that these differences can be seen as gifts through which each church can be a blessing to the others.

Covid and the long-term sickness of our previous Rector have led to a loss of momentum. Since our Rector left after seven years' ministry here, we've spent time reviewing our current situation and seeking God's direction for the future. We now wish to appoint a Rector who will enable us to grow in our faith, work more closely together, and reach out more imaginatively to our communities, especially to young children and families.

If you decide to apply, we would be pleased to receive your application for this position and look forward to the possibility of welcoming you here.





# 1

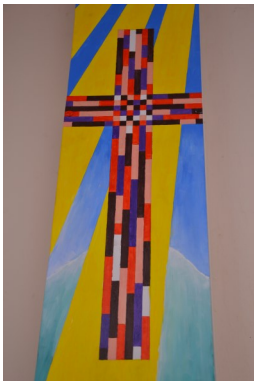
# LOOKING AHEAD—OUR VISION

*Serving in our communities  
with faith, hope and love.*

To help us to move forward in the vacancy, we held a Vision Day open to all members of our congregations and communities. Over sixty people attended and were asked to consider matters such as our strengths, key challenges and achievements, and to share our thoughts about the future in our Benefice.

We also invited our communities to complete a questionnaire. This provided a valuable insight into what people felt we had achieved over the last five years, suggestions for the future, and their thoughts about what they would like us to consider when appointing a Rector. Over seventy church members, non-church members, and representatives of local organisations returned a completed questionnaire. The Headteacher, Staff and Foundation Governors at Saltford School responded. The pupils described what sort of person they would like the new Rector to be. Our Vision Statement and Priorities are derived from our consultations.

## Priorities derived from the Vision Statement



### Growing our Faith

We want more people to come to know God and for us to draw closer to Him and deepen our relationship with Jesus Christ through prayer, worship and caring for others. We believe that we are called to live out our faith in everyday life.

### Deepening our Unity

We believe that God is calling us to grow in unity within and across the benefice through shared worship, fellowship, shared resources and other activities.



### Engaging with our Communities.

The three churches share a common vision of the need to reach out more imaginatively to our communities but there will be differences in approach depending on the nature of the congregations and villages we serve. We wish God's church to be at the heart of our communities.

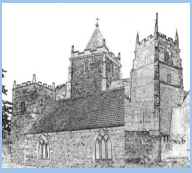
### Welcoming New People into our Churches.

We want to welcome people of all ages and backgrounds so that everyone feels loved, appreciated and part of our church family.



### Reaching out to God's World

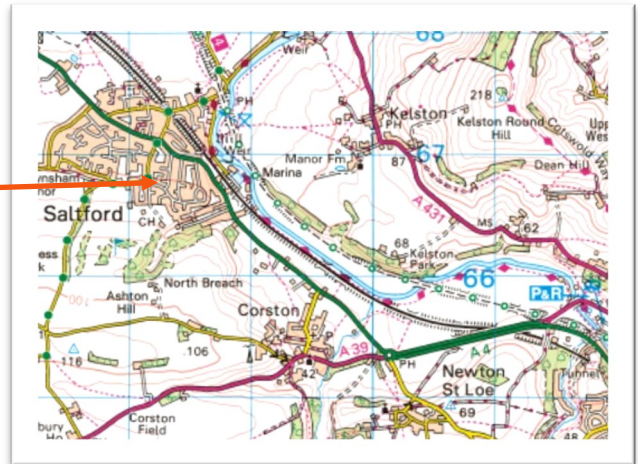
Through prayer and action, we want to care for creation and seek justice and reconciliation in our local communities, the country and the world beyond.



# 2

# THE BENEFICE

## The Three Villages



The three villages have a history going back over many centuries. Saltford is the largest village with a population of just over 4000, with Corston 499 and Newton St. Loe 180 in 2021.



While there are a number of businesses linked to agriculture, services and retail in the area, many of the working population commute to Bristol, Bath or surrounding areas. Saltford is on the main A4 which links Bath with Bristol. There is a frequent bus service between the two cities. Corston is on the A39. Newton St Loe is less than a mile away from Corston and two miles from Saltford. Currently the nearest railway station is at Keynsham on the main line between Bath and Bristol and there is discussion about reopening Saltford station.

**Saltford** historically was the smallest parish. However, the village has grown significantly. Now Saltford has a doctors' surgery, two dentists, a library with a Post Office Community Hub, convenience stores, pubs, restaurants, hair-dressers and even a funeral directors.



There is a thriving nursery school and a two-form entry Church of England Primary School. At eleven, most children move to Wellsway School in Keynsham. Both schools have been judged "Good" by Ofsted.



The village has a very active Community Association which manages the large village hall. This provides a venue for a variety of clubs and organisations.

The Community Association distributes a bi-monthly magazine, SCAN, to every home in the village and also to the eastern side of Keynsham. The three churches have a page in this publication to inform the whole community about services and other activities

**For more information about our villages see the web links in Appendix 1 on page 18**

Adjacent to the Community Hall is Saltford Sports Club which is the home to local cricket and football teams and there is a very successful tennis club. There are also playing fields, a golf club, rowing club and a sailing club in the village. The Bristol to Bath Cycle Path also runs through Saltford.

Saltford Environment Group works tirelessly towards a sustainable future for the village and its surroundings. Their website has a range of information about the village, its history, the environment and current campaigns to retain the green belt and reopen the station. The Saltford Heritage Centre is in St. Mary's Church Hall. There is a small Community Church in the village.



**Corston** has a strong feeling of community and a large proportion of the residents take part in church and village events. Community life is centred on the church, the busy village hall, the shop/Post Office and the new community orchard. The playing field has a beautiful adjoining conservation area with a stream, picnic benches and a woodland walk. The main village groups change and adapt according to demographics. For example, a monthly cinema has recently started. The church and village community provide continuing stability and friendship. Church Farm Business Park and St Teresa's Nursing Home both provide local employment and Bath Spa University is within walking distance of the village.

**Newton St. Loe** lies to the west of Bath, just off the A4, in the conservation area of Newton Park which includes Bath Spa University. The parish is part of the Duchy of Cornwall Estate which has its regional office in the Old Rectory. The Duchy is supportive of Newton residents and Holy Trinity Church. In the past, most of the houses in the village were inhabited by people either connected to the Duchy estate or to the long time families. Now houses have shorter term leases which means greater turnover. There are several leased larger houses and three freehold properties. There is a village shop, a very successful and busy farm shop and restaurant and a village hall. Most of the congregation at Holy Trinity come from the Newbridge and Weston areas of Bath, with few who actually live in the village.





# THE BENEFICE

## The Benefice of Salford, Corston and Newton St Loe

was formed in 1976. Each of the three churches, like the three villages they serve, has its own unique character. They offer considerable diversity with different congregations and needs. In past years, they have operated largely autonomously. However, the consultations at our January Vision Day showed signs of a desire among the three congregations to develop more shared activities and resources across the Benefice without threatening the identity of each church. Recent events also reflect this growing will for greater unity. The joint services held by Zoom and telephone during the pandemic were well supported by members from all three churches. Cross benefice telephone services have continued since that time. Zoom is now used by two benefice prayer groups and a homegroup. There is a WhatsApp Prayer, Care and Share group. Recently, a walking route was created to link the three churches together. Church members and villagers were invited to create their own Stations of the Cross as they walked the route in Holy Week. Churches follow a monthly rota of varied services with leadership resources shared across the benefice.

At our Vision Day consultation in January, people showed appreciation for the variety of services in the Benefice, the cross-Benefice worship leaders, the Benefice Administrator and the potential for greater unity through music and a shared pastoral care system. All three churches are seeking to build more links with families and children, to improve their pastoral care and to create more links with their communities .

The creation of a new post for an Anglican Chaplain and Chaplaincy Team Leader at Bath Spa University has created exciting new possibilities for both churches nearby. There are many opportunities and challenges so there is much to be done. God is continuing to lead us in new directions in the Benefice and encouraging more people to use their gifts and skills.



At **Salford**, we are a church family with a strong and growing lay leadership team. In addition to a team of lay worship leaders and pastoral assistants, others are using their gifts and skills to participate in services, maintain our church buildings, visit the sick and bereaved and more. We struggle, though, to meet all our needs, always seeking to find more volunteers. People appreciate our worship, prayer, teaching and fellowship and the opportunities there are to grow in faith. At present there are about 35 to 40 in our regular Sunday congregations. The number on the electoral roll is 96. St Mary's is a member of Churches Together in Keynsham and Salford. There is much

**For more information about the numbers attending our churches and their different services see Appendix 2 on page 19**

scope for developing this link especially with the rapid extension of Keynsham eastwards towards Salford.

**Corston** church is set within a small rural community. It is a fellowship of all ages with the majority over the age of 50. There are some worshippers from Salford and Newbridge with a few children coming to the 'Worship For All'. There is no Sunday School at the present time. However, an area in the north aisle is prepared for and is often used by families with small children.



# THE BENEFICE



Children are always made welcome and services are very inclusive. When we have a 'special' service, the number of children increases. There is always a welcoming atmosphere, and we supplement this with refreshments before the third Sunday service to provide further opportunities for fellowship.

Corston has reordered its interior and we can move the furniture around for different occasions. We desperately want the church to be used by the local community and others. We have had choirs and other musical concerts and the acoustics are wonderful. The gift of a beautiful piano has enriched everything we do. The organ is played regularly and there is a fine bell ringing team. We need leadership to start prayer and bible study groups.

The congregation at **Newton St Loe** has a small core of people who actually live in the village but the church also attracts people from surrounding communities. The age profile ranges from 6 to 90 plus. We have three school age children for whom regular items are included in services.

For special services, an augmented choir is assembled by a professional musician. Key special services such as Harvest and Christmas are more supported by people from the village who do not normally attend.



## Benefice Staff

<b>Rector</b>	Vacant (visiting clergy covering the Vacancy)
<b>Readers</b>	Teresa Austin , Robin Dixon, Ken Plant
<b>Lay Assistants</b>	There are seven lay pastoral assistants and six lay worship assistants.
<b>Church Administrator</b>	Liz Benden (Based in Saltford, providing clerical and administrative support across the benefice. 25 hours a week)

### PCCs

**St Mary's , Saltford.** There are 15 PCC members including our Lay Chair, **Darrell Pickup**, two Churchwardens **Norman Osborne** and **David O'Neill** and the Treasurer, **Pam Faulkner**. Teams with specific roles make up subgroups of the PCC.

**All Saints, Corston.** There are 9 members on the PCC. These include **Jason Alway**, the Lay Chair and Treasurer and two Churchwardens, **Julie Bracewell** and **David Parfrey**. There are Prayer and Worship, Fabric and Social sub-committees.

**Holy Trinity , Newton St Loe** There are 8 PCC members, including **Teresa Austin**, Lay Chair and Reader, **Harvey Evans**, Churchwarden and Treasurer and **Matthew Morris**, Churchwarden.

Our Patrons are the Diocesan Board of Patronage and the Duchy of Cornwall.



# 3

# STRENGTHS AND CHALLENGES

Strengths	Challenges
<p><b>ALL THREE CHURCHES</b></p> <ul style="list-style-type: none"> <li>• Welcome and hospitality offered by the three churches.</li> <li>• Strong sense of community and fellowship within each of the churches.</li> <li>• Worship leaders, preachers and music teams.</li> <li>• Good connections with the individual village communities.</li> <li>• Ongoing efforts to maintain and increase outreach to the local communities with a range of activities.</li> <li>• Communications via digital media for publicity, worship, prayer, teaching and outreach across the Benefice. Each church has its own web site.</li> </ul> <p><b>SALTFORD</b></p> <ul style="list-style-type: none"> <li>• Links with Saltford School</li> <li>• A refurbished church hall</li> <li>• Regular Parish Breakfast</li> <li>• Growing lay ministry</li> <li>• Quiet Garden</li> <li>• Financial stability</li> </ul> <p><b>CORSTON</b></p> <ul style="list-style-type: none"> <li>• Community outreach (soup lunches, coffee shop etc)</li> <li>• Corston Church Preservation Trust</li> <li>• Supportive local community</li> <li>• Churchyard maintenance</li> <li>• Lay ministry development</li> </ul> <p><b>NEWTON</b></p> <ul style="list-style-type: none"> <li>• Community support and opportunities</li> <li>• Contemplative ethos of the church building</li> <li>• Strong leadership team</li> <li>• Successful fund raising and repair programme.</li> </ul>	<ul style="list-style-type: none"> <li>• To appreciate and value the different cultures of the three churches</li> <li>• To improve collaboration and communication between the three churches (sharing gifts and skills etc)</li> <li>• To deepen and create more imaginative links with our communities.</li> <li>• To review and revise the pattern of services across the benefice.</li> <li>• To create a comprehensive and shared approach to pastoral care</li> <li>• To grow the congregations, children, young adults and families in particular</li> <li>• To increase the number of volunteers in our churches.</li> <li>• To develop opportunities to grow in our faith – prayer, bible study.</li> </ul> <ul style="list-style-type: none"> <li>• To develop and support more social events for church and community.</li> <li>• To work alongside the local community and school in a more effective and more creative way and reinstate the post of Community Outreach Worker.</li> </ul> <ul style="list-style-type: none"> <li>• To help grow the church as the ‘hub of the community.’</li> <li>• To make the church more welcoming to families and children</li> </ul> <ul style="list-style-type: none"> <li>• To link more closely with Bath Spa University and the many visitors to the village</li> <li>• To develop the church as a community centre</li> </ul>





# 4 THE LIFE OF THE THREE CHURCHES



**St Mary's Saltford**



**All Saints, Corston**



**Holy Trinity Newton St. Loe**

## Worship and Prayer

Prayer supports and sustains the life of the churches. Each week since November 2020 there has been Prayer@6 on Zoom four evenings a week.



Two or three members of the congregation of St Mary's meet for Morning Prayer on Zoom three times a week. During Covid, a Prayer, Share and Care WhatsApp group was set up in Saltford. This reaches across the age groups and offers prayer and encouragement that is greatly valued.

**The pattern of services in the benefice is outlined in Appendix 3 on Page 20**

Worship across the Benefice includes Holy Communion, Evensong, Morning Worship (with plenty of lay involvement in intercessions and readings), together with more informal services such as the monthly all age Connect service in Saltford and Family Worship for Everyone in Corston. Music is important in all three churches. It is led by the piano or organ. We sing a wide range of traditional and modern hymns and worship songs. At Newton the choir is augmented by other choirs for special services. During consultations the idea of forming a Benefice choir for special Benefice services was suggested.

All three churches have a variety of special services in addition to Remembrance Sunday, Easter, Christmas, Harvest etc. Corston church now has only two services a month but would like more. There are special services such as a Plough Service in January and Candlemas Service. Special services are not confined to



the church buildings. Carols have been sung around the Christmas tree in Corston and at Newton Farm Shop. A cross Benefice telephone service on Sunday afternoon and a Wednesday morning telephone service, which both started during lockdown, have continued. They attract 10 - 12 people most weeks. A Reader leads the annual World Day of Prayer Service for the Benefice.

In the past year the churches have relied on the help of visiting retired clergy, the team of Readers and lay worship assistants to lead services. Currently three Readers assist in leading and preaching. Lay worship leaders are involved in monthly Connect Services in Saltford, Worship for All in Corston and also in Morning Worship. The Reader leading Morning Worship at Newton St Loe always tries to ensure that any children are included in the worship.

All are warmly welcomed to our services. Worship is highly valued and sustains our regular congregations. Special services and All Age Services provide opportunities to invite people from our communities who are not regular worshippers.



# THE LIFE OF THE THREE CHURCHES

## Pastoral Work Supporting and Caring

**Saltford** The Readers and a team of lay pastoral assistants and others in the parish take responsibility for pastoral work. A lay pastoral assistant serves as the team coordinator. There is a WhatsApp Prayer Care and Share group. Telephone services and home visits provide support and follow up for the elderly and housebound. Readers and others provide bereavement support. Home communions are available on request.

**Corston.** A lay pastoral assistant and worship leader has taken a service in St Teresa's Nursing Home for 20 years. Once a month, all those who can and want to attend are brought to a quiet room and spend 45 minutes singing hymns, sometimes with accompanying musical instruments, listening to an illustrated bible reading, listening to a short talk with interacting questions, and sharing people's prayer needs. Afterwards, a cup of tea is always welcomed. A short communion service was available before COVID.

At **Newton St Loe**, regular home communions are offered to all those who are unable to attend services through illness, age, lack of transport etc. Pastoral support is usually provided by the Reader where required and particularly at times of bereavement. Many villagers choose to have Christian funeral services either at the church or at the local crematorium, or a combination of both.

## Children and Young People

As with many churches, the age profile of our young people's work has changed over the years. An identified challenge now is to reach out to junior age children and their families and to enhance and extend our work with the school in Saltford. Our vision includes the return of activities for children such as a Holiday Bible Club and Messy Church.



## Church Organisations and Groups

In **Saltford**, four home groups meet regularly on Zoom or in person with a total of 34 regular members. In the past there have been men's groups, children's groups, a Holiday Bible Club and social groups. Covid and the ill health of our previous Rector has meant that many of these valued activities are no longer taking place and there is a great will for them to be revived. A monthly Parish Breakfast in Saltford is growing in popularity and every month raises funds for one of our chosen charities.



**Corston** church is linked with community activities and church members serve on community committees. The bell ringers are very active both in Corston and beyond. Three of our band are members of the oldest and most elite of the Bell-ringing Associations and are also senior officers within the Bath & Wells Diocesan Association of Change Ringers. The band operates as a Benefice band, ringing for services in both Corston and Newton St Loe. However, ringing at Newton has been paused while some loose plasterwork is investigated.



# THE LIFE OF THE THREE CHURCHES

## Community Links & Outreach

In **Salford** the church is an affiliated member of Salford Community Association which runs the village Community Hall. Being church in this strong and supportive community is very much part of our vision. The church is committed to working with the Community Association, complementing its activities to create positive change.



In 2021, funds from a post-Covid Heritage Grant Fund were used to improve visitor experience at the church. Updated leaflets and booklets on the history of the building and guides to the church, churchyard and the Salford area were designed and printed. Other activities included the installation of Wifi internet for visitors, a contactless giving facility, and improvement of the appearance of the churchyard and car park.

St Mary's Church takes an active part in the biennial week-long Salford Village Festival when there is a Festival Service in the church and the Church Hall is used for talks, exhibitions and refreshments. Salford Open Gardens, an important part of the festival, has significant community involvement. It is organised by the church on behalf of the village.

The Heritage Centre which is based in the Church Hall is open to the public on special occasions, usually in conjunction with other special community, educational and/or heritage events. It can also be opened for private viewings and small groups. Other community use of the Church Hall includes exercise classes



and other groups. It is the local distribution centre for the Food Bank.

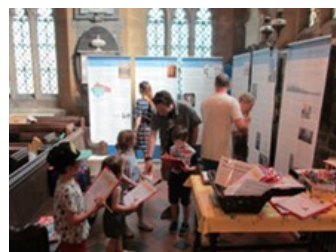


Harvest, Remembrance Sunday, Crib Service and a Christmas Carol Service have significant community involvement. An important focus for the future is to continue to reach out to the community and develop new ways of living and telling the story of Jesus.

In **Corston** village markets and soup and pudding lunches, held monthly in the village hall in aid of church funds, are enjoyed by many Corston people. There are very strong links in Corston with the local nursing home, St Teresa's. Residents regularly attend the coffee mornings in the church. Corston church actively cooperates with Corston Parish Council and has links with the Village Hall Committee, Country Fair and Community Orchard Committee.



In **Newton St Loe** the proceeds of Open Gardens for the National Gardens Scheme support Holy Trinity church. Regular Craft Fairs are held in the church. There are monthly lunchtime concerts in the church with students from nearby Bath Spa University. This is a link that could be developed further. Each year the church receives several requests for the building to be used for filming. A recent heritage exhibition and trail attracted visitors and ramblers.





# THE LIFE OF THE THREE CHURCHES

## Responsibility to the Wider World

St Mary's is a Fairtrade church and Saltford is a Fairtrade village. Christian Aid is strongly supported by the church and the village. Each year the church nominates and gives regular support to a range of charities, including Open Doors, Love the One, the Bible Society and Christian Aid. Occasionally, additional support is given to local charities such as the Foodbank, and the Childrens' Society. St Mary's Church Hall is a distribution centre for the local Trussell Trust Foodbank, and many members of the church serve as volunteers.

Corston church regularly supports Christian Aid, The Royal British Legion, The Children's Society and Operation Christmas Child. The charity Ripple Effect (formally Send a Cow) is based in Newton St Loe and the church also supports Christian Aid and Dorothy House, a local hospice.

## Connections with other Churches, the Deanery and the Diocese

### Chew Magna Deanery

Chew Magna Deanery is one of eighteen deaneries in the Diocese of Bath & Wells, and one of five in the Archdeaconry of Bath. The Archdeacon of Bath is a member of the Bishops' Staff with whom the clergy and benefices have most immediate contact.

There are nine benefices in the Deanery, although, because the Deanery is considering reorganisation during 2023, this number may change. Reorganisation is consequent upon the Diocese of Bath and Wells proposing a reduction in stipendiary clergy posts from 178 to 150 across the Diocese over a period of 5 years. The total number of stipendiary posts in the Deanery has been reduced from 9 to 7. Keynsham parish has lost one team vicar post and the Deanery needs to lose another post.

The post at Saltford, Corston and Newton St Loe is not under threat, but further changes to the partner parishes within the benefice may be necessary.

The Deanery Chapter contains seven clergy licensed to a variety of posts and seven retired clergy. It meets every other month for Morning Prayer or Holy Communion followed by a discussion or Bible Study. In the months between chapter meetings, the clergy meet for a pub lunch at a central location and, in the summer, there is a barbeque for clergy and their partners. Usually there is an annual Quiet Day led by an outside speaker.

The Deanery Synod which meets three times a year is a key body for support, and decision making within the Deanery.

Should you take up this post, please be assured of a very warm welcome from the people and clergy of the Deanery.



**DIOCESE OF Bath & Wells**  
Living the story. Telling the story.

**In response to God's immense love for us we seek to be God's people living and telling the story of Jesus.**

The Diocesan vision (above) speaks of the story of Jesus; his life, teaching and work, his death and resurrection; the story which is the context of our faith and the content of our message.

We seek to live this story as disciples of Jesus Christ in the world and to tell it, both in sharing the good news and by the way in which our lives speak about Him.

The diocesan strategy is built around three priorities:

- 1 To place mission and evangelism at the heart of all we do.
- 2 To re-align our resources towards mission.
- 3 To identify, develop and release the gifts of all our people.

The priorities provide a framework for decision-making and planning at parish, benefice, deanery, archdeaconry and diocesan levels.



# SALTFORD C OF E PRIMARY SCHOOL



**Salford**  
CofE Primary School

Salford Church of England Primary School is a Church of England co-educational school that serves the Salford area and surrounds, catering for children from 4 years to 11 years. There are just under 450 children on roll. There are two classes each for Reception and Years 1 to 6.

The School lies on a spacious site at the centre of the village. The well-maintained indoor facilities include a spacious hall, library, and ICT Suite, and the extensive and rich outdoor environment includes playgrounds, sports field, a school garden and a swimming pool.

The children are highly motivated, the parents supportive and the links with the wider community are excellent.

Salford School converted to an Academy and joined the Futura Learning Partnership in 2016 in order to secure its long term future and continue offering the best opportunity for children to progress and achieve. The Partnership is a family of schools in the West of England that includes primary schools, secondary schools, post-16 and special schools.

The school also has close links with many local partners including Bath Spa University; the children benefit enormously from working closely with additional adults to support their learning.

In November 2017 a SIAS (Statutory Inspection of Anglican Schools) found that our distinctiveness and effectiveness as a Church of England school was outstanding. We have strong links with SACRE, the local organisation that oversees the teaching of RE. The collection of RE artefacts, which can be loaned to schools, is kept at Salford and we often host RE training for teachers from other schools. Foundation Governors play an important role in the school and meet as a team six times a year as well attending the six full governor meetings.

We are a community in which Christian values are upheld. As a Church of England School, acts of Collective Worship form the basis of our corporate experience and mark important times and occasions e.g. Harvest, Remembrance, Christmas and Easter. Stories from the Bible are often at the heart of our collective worship, also times for prayer and singing. Children participate in a daily act of collective worship, following a series of themes linked to school values and Bible stories. Teaching staff and members of the church or school community lead services every day in the school hall. These include in a typical week:

- A whole school service (where a theme is introduced) led by representatives of St Mary's Church including the Open the Book team.
- A service led by Mrs Sage, a member of staff or by 2 staff for smaller groups by age

A whole school celebration service (where certificates, medals, etc... are awarded) led by Mrs Sage

There are opportunities for every child to visit St Mary's Church during the year.



## Buildings



**St Mary's, Saltford** is a small Grade II listed building with a large congregation. It has stood in the heart of the old village of Saltford for over a thousand years. The oldest part of it is the church tower which dates from Saxon times. The nave and chancel are believed to be Norman. There is a Norman font and some fine stained glass. Today, the church is bright and warm and the Sunday morning service congregation makes it look comfortably full. For festivals and special services, especially at Christmas, we often need to place chairs in the aisle and use the choir stalls for extra seating to accommodate congregations of about 100 people. The church has a good PA system and Wifi. The next step is to provide a means of projecting words and pictures which is compatible with the historic building but enhances our more informal worship.

The church yard is closed for burials and is maintained by the Parish Council. There is a Quiet Garden adjacent to the church which is maintained



by members of the congregation and is used for the burial of ashes. Saltford Environment Group is about to set up a gardening team in Saltford for looking after targeted public green

spaces and the churchyard might be an appropriate area for a community group to support alongside members of the church.

Part of the old Primary School near the church is now used as the Church Hall with a main hall and kitchen. The Benefice Office and two smaller rooms are upstairs. One of the rooms contains Saltford Heritage Centre, a joint venture between the Saltford Environment Group and St. Mary's Church. The facilities are well used by the church and the community with income from lettings supporting the work of the church.

Money from a Heritage Fund Grant awarded in 2021 was used for church refurbishment which included extra cleaning to keep the building Covid safe, essential repairs to prevent a damp church for visitors, improved ventilation, essential safety maintenance work and installation of LED lighting to improve safety.



One of the challenges for the growth of the church in Saltford is the physical size of the building. In the 2021 census, over 50% of the residents of Saltford identified as being Christian. That is over 2000 people. As we look to the future, we realise that to be church in our community we need to be creative and imaginative in our worship and mission.



**All Saints, Corston** dates back 800 years and is a small building seating about 100 in pews but many more can be seated when

chairs are added. It has a peaceful atmosphere and is set in a well-kept churchyard. We have been able to maintain the church in good order, including re-roofing the whole building, re-



# RESOURCES

hanging the bells and repairing the tower. We have a fitted kitchen with storage, a toilet, a sound system, Wi-Fi, contactless payment facilities and CCTV protection at our main door.



The chancel and north aisle have been reordered to provide flexible areas for informal or small group worship, meetings, concerts, hospitality and other church and community uses. We want the building to be used even more than it is at present.

We are very grateful to the Corston Church Preservation Trust which, through its fundraising from a wider network, provides significant help to maintaining our building.



**Holy Trinity, Newton St Loe** is the largest church building in the Benefice and is Grade II\* listed. It has a public footpath running through the churchyard. There is a bell tower with six bells by Bilbie and the church shares a Benefice band with Corston. There had been plans drawn up and a faculty approved for a WC, a hospitality unit and new boiler. However, there was a change of Rector who preferred a different positioning within the church and during the pandemic in 2021 the PCC decided not to ask for an extension of the faculty due to lack of funds at that time and probably for the foreseeable future.

## Finance

**St Mary's, Saltford** is registered as a charity under the Charity Commission. It is fortunate to have buildings that are generally in good condition and relatively easy to maintain. However, over the next few years a significant amount of maintenance work will be required including Quinquennial repairs, redecoration of the inside of the church and maintenance and repairs of the exterior of the Church Hall. Careful stewardship has allowed us to meet our financial commitments despite a significant fall in income from Hall lettings during Covid. For the significant items of future work to be completed, grants and/or donations from the congregation and community will be required to fund them. We support projects in mission and outreach every year.



**Corston's** Parish Share is a challenge but we are on the right path. Although we have only modest financial reserves, we do have a generous congregation. The Corston Church Preservation Trust has provided generous financial support towards the cost of preserving the church building.

**Holy Trinity Newton St Loe** has paid in full the Parish Share Band 'E' thanks to regular giving and annual fundraising. The upkeep of the listed building is a challenge for finances and currently works outstanding are repairs to the clock, war memorial and possibly the tower, also woodworm treatment once the resident bats cease hibernating.









# THE NEW RECTOR

## What the Rector can expect from us

- A wide range of practical support from committed lay teams willing to share in meeting future challenges.
- PCCs who are keen to move the churches forward in cooperation with the new Rector.
- Warm friendship, generous cooperation and enthusiastic prayerful support.
- Support in organising and leading worship and other activities including working in the local primary school and residential homes.
- The provision of administrative and financial management support, a well-equipped Benefice Office, the full allocation of annual holidays, a regular day off each week and financial support for retreats and personal development each year.

## The Rectory



The Rectory is in Saltford. It is a spacious four-bedroom family house close to the heart of the village and in a residential road only a five minute walk from the church. The A4 which runs through the village is a two minute walk away and all the local shops and amenities are close by. A large Waitrose supermarket is less than two miles away.

The property is double glazed with gas central heating. Entrance is via a porch into a hallway. Leading off the hall on one side is the main living space which extends from back to front. The room is large and very light with patio doors leading out to the garden. On the other side of the hallway are a dining room at the front of the property and a kitchen at the back. From the dining room there is access to a self-contained large private office

which has a separate entrance from the outside of the house. The kitchen is modern and has all the necessary appliances. Exit to the back garden is via a large utility area. There is a shower unit off the utility area and a downstairs toilet off the hallway. The stairs from the hallway ascend to a landing which leads to three double bedrooms, a single bedroom and a family bathroom. A loft ladder drops down onto the landing to give access to a partially boarded and spacious attic.



Outside at the rear is a reasonably large garden, laid out mainly to lawn. There is an apple tree and a vegetable plot. To the front, is a smaller garden with a small lawn and a mature shrub and flower border. On the side of the property is a garage, carport and enough off- road parking for two cars.





# APPENDIX 1 Web Links

## St Mary's Salford

<http://www.stmaryssalford.org.uk>



## All Saints, Corston

[www.allsaintscorston.org.uk](http://www.allsaintscorston.org.uk)



## Holy Trinity Newton St. Loe

[www.holytrinitynsl.org.uk](http://www.holytrinitynsl.org.uk)



## Salford

[Welcome - Salford Parish Council.](#)

<https://www.salfordhall.co.uk/>

[Salford Environment Group \(SEG\)](#)

<https://www.saltfordschool.org.uk/>

[Home / Wellsway School](#)



[Churches Together in Keynsham and Salford \(ctksinkeynshamandsalford.co.uk\)](http://ctksinkeynshamandsalford.co.uk)

## Corston

[Corston Parish Council – Near Bath, Somerset \(corstonpc.org.uk\)](http://corstonpc.org.uk)



The new name for Send a Cow

## Newton St Loe

<https://www.bathspa.ac.uk>

[Newton Farm Shop - Newton Farm Shop](#)

<https://rippleeffect.org/>



# APPENDIX 2 Electoral Rolls and Attendance figures

## Electoral Roll 2022 & Estimated number of Regular Worshipping Community at end of 2022

<b>Saltford</b>	<b>96</b>	<b>78</b>
<b>Corston</b>	<b>48</b>	<b>35</b>
<b>Newton St Loe</b>	<b>34 (16 residents and 18 non-residents)</b>	<b>24</b>

## Occasional Offices 2022

	<b>Saltford</b>	<b>Corston</b>	<b>Newton St Loe</b>
<b>Baptisms</b>	<b>6</b>	<b>3</b>	<b>3</b>
<b>Weddings</b>	<b>3</b>		<b>1 + 1 Blessing</b>
<b>Funerals, Services of Thanksgiving &amp; Burial of ashes</b>	<b>9</b>	<b>2</b>	<b>3</b>

## Average Attendance at Services 2022

	<b>Saltford</b>	<b>Corston</b>	<b>Newton St Loe</b>
Average attendance - Adults 16+ on a normal Sunday main service	34	27	16
Children on a normal Sunday main service	2	3	3
Average attendance at All Age Family Service	33	29	
Child Attendance at All Age Family Service	2	6	
Communicants on Christmas Eve and Christmas Day 2022	32	35	27
Total Attendance Christmas Eve and Christmas Day 2022	176	107	32
Communicants Easter Sunday 2022	46	36	24
Attendance Easter Sunday	52	43	24
Attendance Remembrance Sunday Service	160 (41 adults and 119 children)	46	25
Attendance at Telephone service	10		



# Appendix 3

## Worship in the Benefice

### Benefice Worship Rota Pattern of Worship 2023

	1 <sup>st</sup> Sunday	2 <sup>nd</sup> Sunday	3 <sup>rd</sup> Sunday	4 <sup>th</sup> Sunday	5 <sup>th</sup> Sunday
<b>Saltford</b>	10am Morning Worship	10am CONNECT <i>Worship for Everyone</i>	10am Holy Communion	10am Holy Communion	10am Benefice Holy Communion
<b>Corston</b>	11.15am Holy Communion	~	Refreshments served from 10.30am  11.15am Family Service <i>Worship for Everyone</i>	~	
<b>NSL</b>	~	11.15am Holy Communion	~	11.15am Morning Worship	
<b>Telephone</b>	<b>4pm Benefice Evensong by Telephone or in church in the summer months.</b>	<b>4pm Benefice Telephone Service</b>	<b>4pm Benefice Telephone Service</b>	<b>4pm Benefice Telephone Service</b>	<b>4pm Benefice Telephone Service</b>
<b>Wednesdays – 9.30 am Benefice Telephone service</b>					

