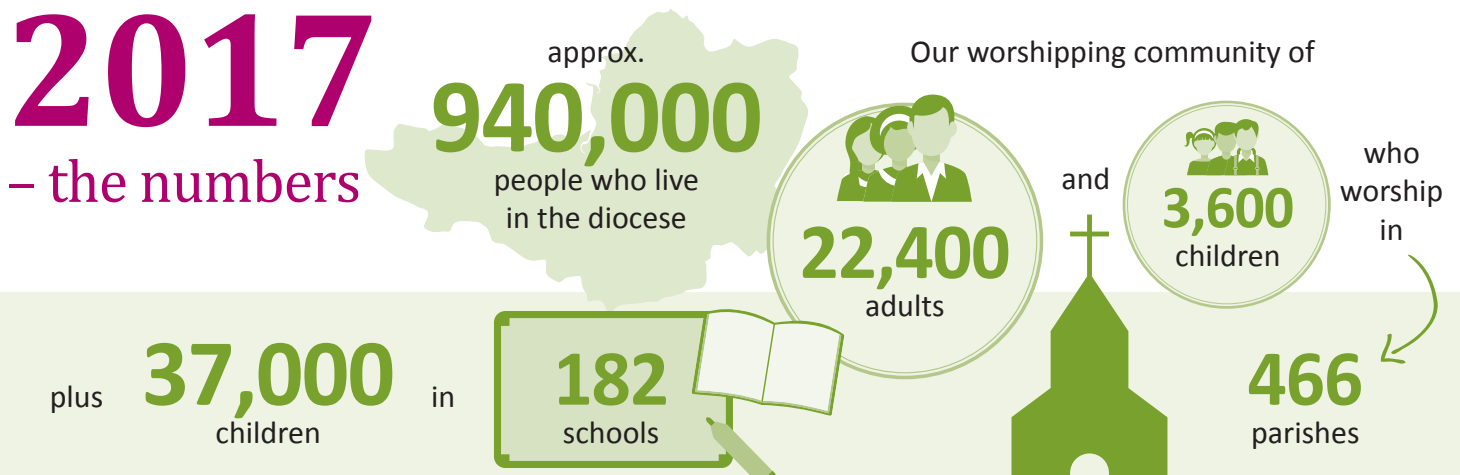


# Bath & Wells 2017 – the numbers

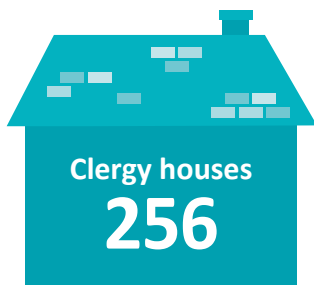
## Who do we serve?



## Our people



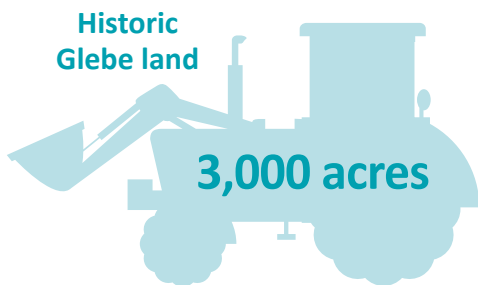
## Buildings, land and investment



### Shares and property funds

**£15m**

We can't touch this money, but these investments + our land = income to limit increases to the common fund



General (free) reserves  
4 months' normal spending

working in

**26**

**Ministry for Mission and other parish support posts**

helping parishes live and tell the story

**14**

**Education roles**

helping schools live and tell the story

**17**

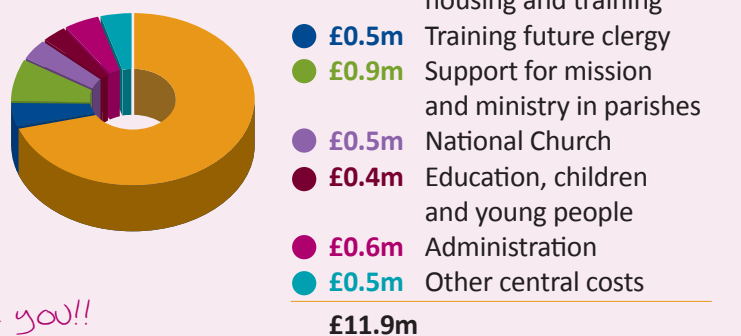
**Central Services staff**

Administration, legal, financial and property

## Where our support comes from



## How the funds are used



\*99.2% of requested contributions - thank you!!

This information is a summary, showing operating income and expenditure of the Diocese. For a copy of the full accounts, including the auditor's report visit: [www.bathandwells.org.uk/annual-reports](http://www.bathandwells.org.uk/annual-reports)